

In-Jet Methanizer for GC-2030

- Converts CO and CO₂ to methane
- Wide linear range from 0.1 ppm to 100%
- Unique, 3D printed non-nickel catalyst for more resistance to oxygen and sulfur poisoning
- Directly replaces existing FID jets; no additional fittings or connections required
- Uses existing FID fuel gases; no additional gas flows required
- Available as a single or multipacks
 - 220-94673-30 single
 - 220-94673-33 3/pk
 - 220-94673-35 5/pk



Performance Specifications

Minimum Detection Limit	1 pg C/sec
Linear Dynamic Range	> 10 ⁶
Accuracy	< 3% standard error
Max. Injection Volume	1mL (10:1 split)
Max. Temperature	450 C
Response Time	Accommodates 500 Hz FID detectors
Detection Precision	< 1% RSD
Lifetime	Usage and analyte dependent. Optimal performance for 6 months before recommended replacement

Typical Operating Parameters

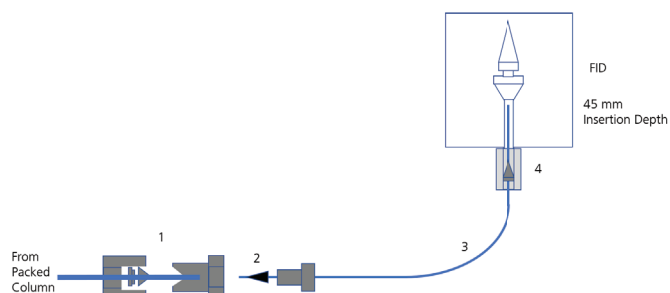
Fuel Gas Ratio	H ₂ 32 mL/min, Air 250 mL/min, Makeup 24 mL/min
Temperature	400 C

Connectivity

Capillary Column Sizes	All columns 50µm to 530µm ID
Packed Column Sizes	1/4" or 1/8" (with adapter)
FID Connections	Capillary, 1/8", or 1/4" connection (with adapter)
Sampling	Gas sampling, manual injection, autosampler, total evaporation headspace

Adapters

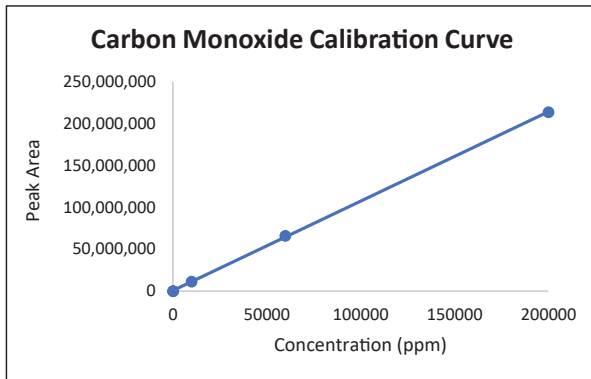
#	Part Number	Description
1	980-27455 or 980-27454	1/8" to 1/16" reducing union 1/4" to 1/16" reducing union
2	980-05636	Fused Silica Adapter for 0.53 mm ID capillary (pack of 5)
3	227-36307-01	SH-Rxi Guard Column; 0.53 mm ID; 5 m*
4	221-32126-08	Graphite Ferrule for 0.53 mm ID capillary (pack of 10)



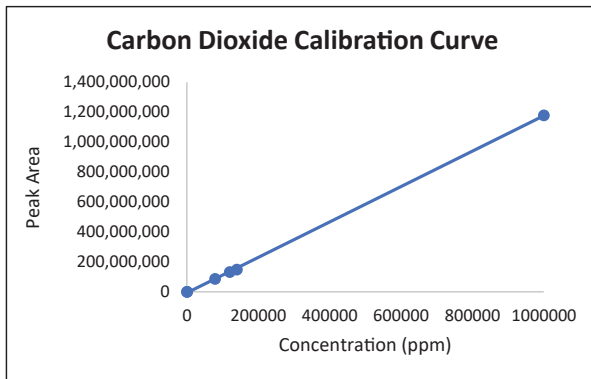
*Should be cut to the desired length

In-Jet Methanizer for GC-2030

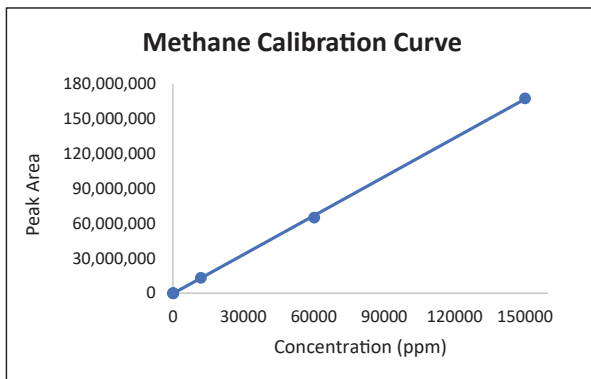
Wide Linear Range for CO, CO₂, and Methane



$$y = 1066.8x + 760762$$
$$R^2 = 0.9999$$



$$y = 1184x - 6E+06$$
$$R^2 = 0.9998$$



$$y = 114.4x - 234683$$
$$R^2 = 0.9999$$



Shimadzu Europa GmbH

Albert-Hahn-Str. 6-10
Tel.: +49 - (0)203 - 76 87 - 0
Fax: +49 - (0)203 - 76 66 25
shimadzu@shimadzu.eu

www.shimadzu.eu

For Research Use Only. Not for use in diagnostic procedures.

This publication may contain references to products that are not available in your country. Please contact us to check the availability of these products in your country.

Company names, products/service names and logos used in this publication are trademarks and trade names of Shimadzu Corporation, its subsidiaries or its affiliates, whether or not they are used with trademark symbol "TM" or "®".

Third-party trademarks and trade names may be used in this publication to refer to either the entities or their products/services, whether or not they are used with trademark symbol "TM" or "®".

Shimadzu disclaims any proprietary interest in trademarks and trade names other than its own.

The contents of this publication are provided to you "as is" without warranty of any kind, and are subject to change without notice. Shimadzu does not assume any responsibility or liability for any damage, whether direct or indirect, relating to the use of this publication.